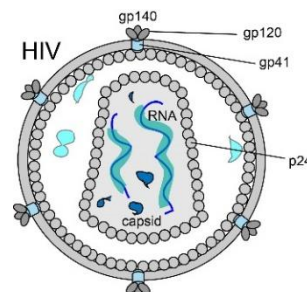


HIV surface protein gp41

Catalogue no.: Q6, Q8 and Q54
Clone name: 2H10, 2E7 and 11F1
Product: VHH directed against HIV gp41

Target: HIV-1 is an enveloped RNA lentivirus from the retroviridae family¹. The surface of virus expresses trimeric mushroom-shaped, HIV-1-Env glycoprotein complexes that facilitate virus uptake via interaction with CD4 and CCR5 or CXCR4 on host cells.⁴ Env is a glycosylated trimer of non-covalently linked gp120 and gp41 (UniprotKB [Q53I19](#)), formed upon proteolytic cleavage of the precursor gp160.⁵



Source: Recombinant monoclonal VHH (*Llama glama*), purified from *S.cerevisiae* using affinity chromatography. Immunization with recombinant proteins. Phage-display selection on captured recombinant protein using competitive or total elution.

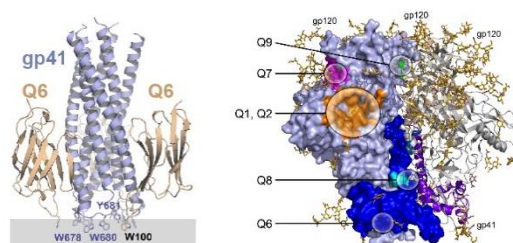
Specificity: Q6 (2H10) binds to membrane proximal external region (MPER).⁸ Q8 (2E7) and Q54 (11F1) bind an epitope exposed just before adapting post-fusion conformation.⁷

Formulation: 0.2 µm filtered solution in PBS.

Storage: Shipped on blue ice. Store at 4°C or -20°C (aliquots). Addition of 0.02% sodiumazide is optional.

Applications: ELISA, virus neutralization.

Examples:



Binding of Q6 (2H10, brown) to gp41 (blue), as determined molecular modelling using HADDOCK.⁸

Products:

Cat. No.	Target	Tag	Label
Q6, Q8 and Q54	gp41	Tagless	No label
Q6c, Q8c and Q54c	gp41	C-direct	No label
Q6c-lab, Q8c-lab and Q54c-lab	gp41	C-direct	Biotin / NOTA / HiLyte488 / IRDye800CW

References:

- [Ganser-Pornillos B.K.](#) et al. (2008) *Curr Opin Struct Biol* 18:203–217
- [Bell N.M. and Lever A.M.](#) (2013) *Trends Microbiol* 21:136–144
- [de Marco A. et al.](#) (2010) *PLoS Pathog* 6:e1001215
- [Tamamura et al.](#) (2005) *Curr HIV res* 3, 289-301
- [Hallenberger et al.](#), (1992) *Nature* 360, 358-361
- [McCoy et al.](#), (2012) *J Exp Med* 209, 1091-1103
- [Strokappe et al.](#), (2012) *PLoS One*, doi: 10.1371
- [Lutje Hulsik et al.](#) (2013) *PLoS Pathog*, doi: 10.1371